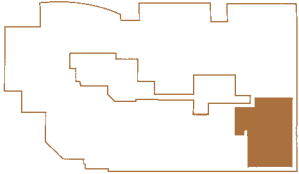
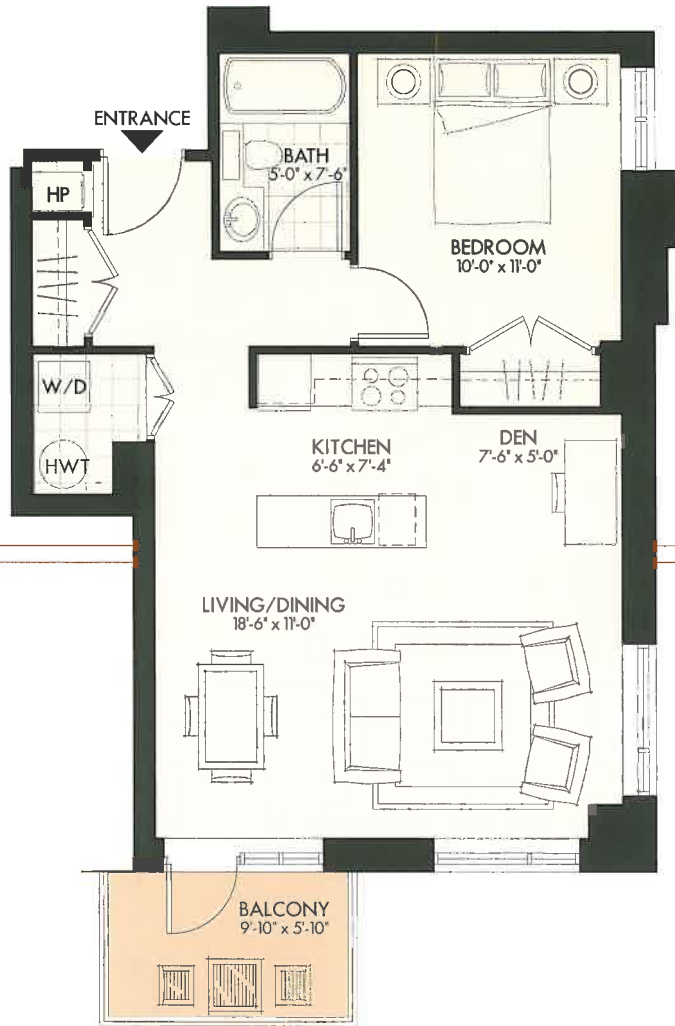


HUDSON PARK II

BY CHARLESFORT



KEY PLAN
2nd to 14th floor



Charlesfort

THE LINDBERGH

680 sq. ft



Charles Lindbergh, the Lone Eagle, is perhaps the greatest personality from the era of the Art Deco movement, better known than any single human being on the planet. Art Deco was highly influenced by images of new technology such as ocean liners, factories and powered flight. Stylized depictions "Lucky Lindy's" iconic spirit of St. Louis would soon appear in Art Deco decorative arts and graphics the world over. Lindbergh was an instant son of New York by virtue of the fact that he departed nearby Long Island on his historic flight to Paris in 1927. Only a month later, he arrived in Ottawa the very same Ryan aircraft to help Canada celebrate its 60th birthday.