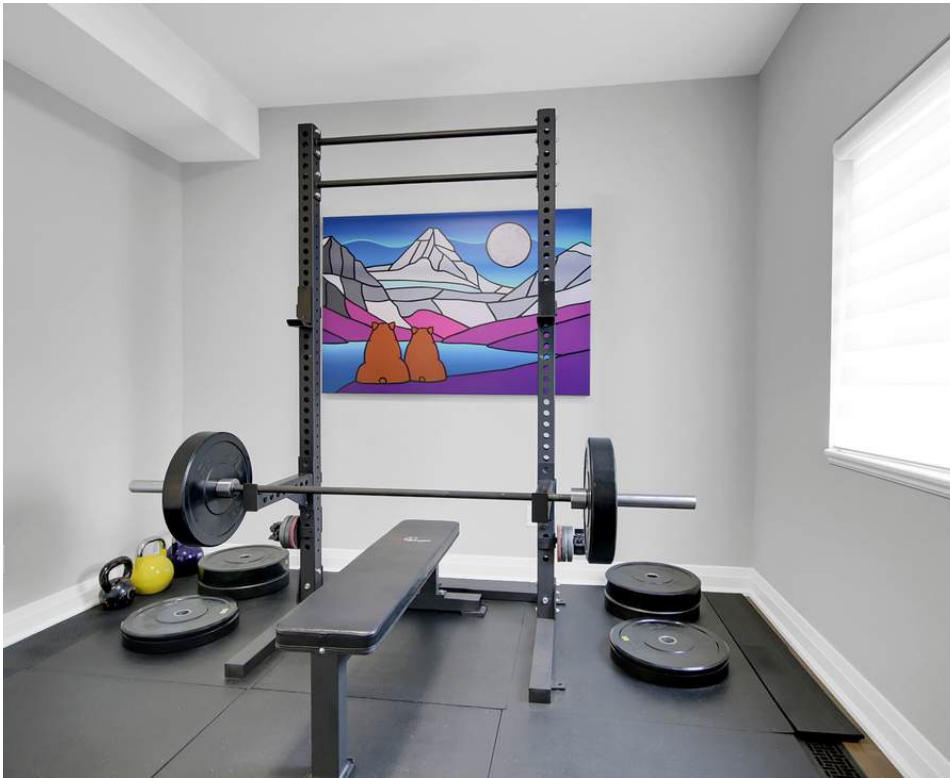


65-B PINHEY STREET

FOR RENT



BUY | UNIQUE HOMES | SELL
NANCYBENSON.COM

4 BED | 3.5 BATH



ROOM DIMENSIONS

ROOM DIMENSIONS DESCRIPTION

MAIN LEVEL

- | | | |
|----------------|-----------------|---|
| • FOYER | • 9'6" x 6'5" | • Ceramic tile, single clothes closet |
| • 4PC BATHROOM | • 7'10" x 4'11" | • tub/shower with glass enclosure, ceramic tile |
| • LAUNDRY ROOM | • 11'2" x 8'4" | • Ceramic tile, stackable washer/dryer, laundry tub, built-in cabinetry |
| • DEN | • 11'0" x 10'6" | • Hardwood floor |

SECOND LEVEL

- | | | |
|----------------|------------------|--|
| • DINING ROOM | • 14'5" x 13'10" | • Hardwood floor, open-concept, door to back balcony |
| • KITCHEN | • 10'0" x 12'4" | • Hardwood floor, Quartz countertops, eat-in peninsula with waterfall edge, pendant lighting, top of the line stainless steel appliances, single door pantry |
| • LIVING ROOM | • 10'0" x 13'10" | • Hardwood floor, floor to ceiling windows to balcony South facing |
| • 2PC BATHROOM | • 7'4" x 2'11" | • Hardwood floor, corner mirror, window |

THIRD LEVEL

- | | | |
|--------------------|-----------------|---|
| • PRIMARY BEDROOM | • 11'5" x 10'7" | • Hardwood floor, two double clothes closets, floor to ceiling window |
| • 4PC ENSUITE BATH | • 6'5" x 8'5" | • Walk-in shower with ceramic tile backsplash, ceramic tile floor |
| • BEDROOM | • 11'2" x 10'0" | • Hardwood floor, double clothes closet |
| • BEDROOM | • 12'4" x 9'5" | • Hardwood floor, double clothes closet |
| • 4PC BATHROOM | • 8'0" x 7'10" | • Tub/shower with glass enclosure, ceramic tile floor, large single vanity with quartz countertop |

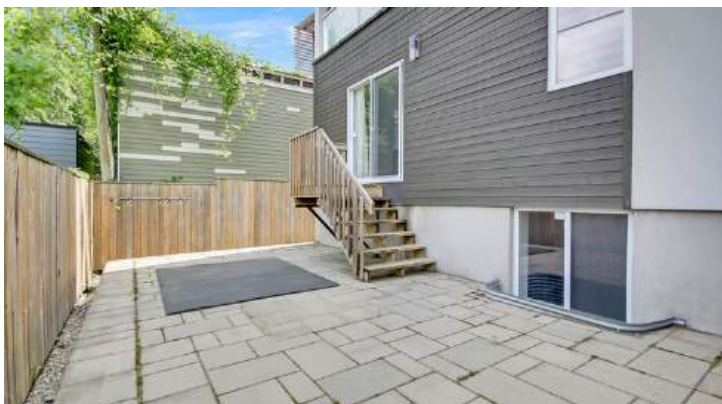
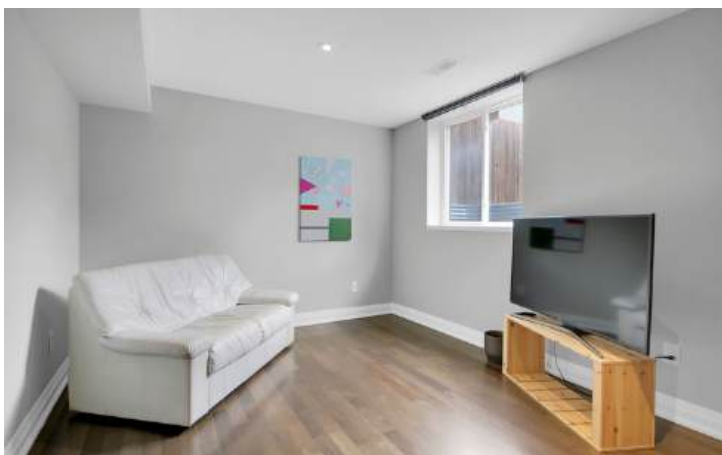
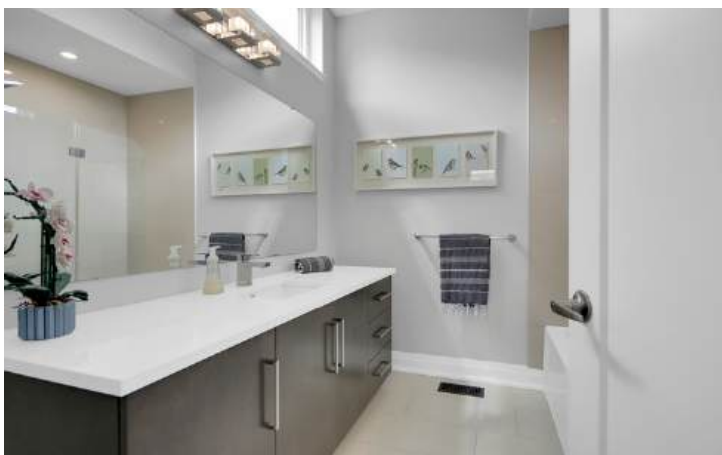
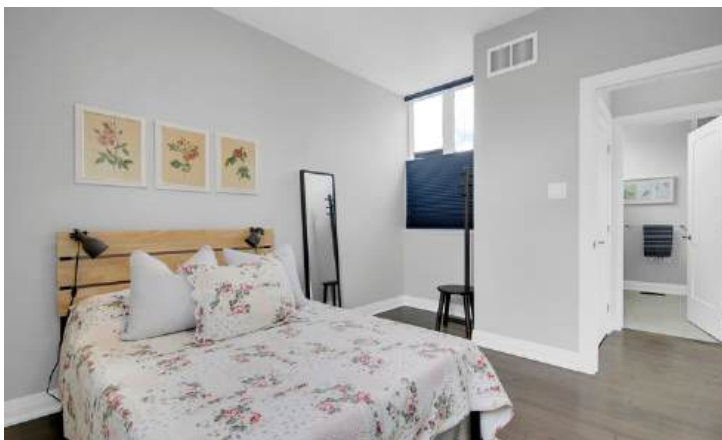
BASEMENT

- | | | |
|-------------------|-----------------|---|
| • RECREATION ROOM | • 14'3" x 8'10" | • Hardwood, oversized window |
| • STORAGE | • 15'12" x 8'3" | • Unfinished, Sump pump, work bench, furnace, hot water |

EXTERIOR STORAGE

- | | |
|----------------|---|
| • 11'3" x 2'6" | • Two separate entrances, Accessible from |
|----------------|---|





GEM FOR RENT ON HINTONBURG

Award-Winning Home. This exceptionally large, over 2550 sqft (approx.) semi-detached home offers luxury and modern living in Wellington Village. This custom home bathed in natural light from south-facing, floor to ceiling windows has a flexible layout which includes 4 bedrooms and 4 bathrooms. Three bedrooms on the top floor and a convenient main-level bedroom/den and full bath perfect for an in-law suite. Luxury finishes feature 9' ceilings, hardwood floors throughout with ceramic tile in entry, laundry, and baths. The gourmet kitchen boasts a walk-in pantry, top-of-the-line stainless steel appliances, quartz countertops, and an eat-in peninsula with a waterfall edge. The primary bedroom offers a fabulous ensuite with a double glass shower and double sinks. A fully finished basement includes a rec room and workshop. Enjoy a private, full-fenced rear garden and convenient carport parking with a large storage cabinet. Walk to everything Wellington Village has to offer!

PLEASE NOTE: Tenants are responsible for: Gas, Hydro, Water & Sewer, Hot Water Tank Rental, Internet, snow removal

INCLUSIONS: Dishwasher, refrigerator, gas stove, hood fan, microwave, washer, dryer, window blinds, all installed lighting fixtures

HEATING: Forced Air / Natural Gas

COOLING: Central Air Conditioning

PARKING: Covered Carport



RE/MAX Hallmark Realty Group | 610 Bronson Avenue, Ottawa, ON K1S 4E6

ALL preceding information is believed to be accurate but not warranted.